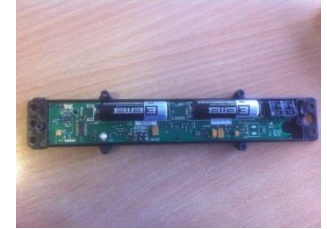


## Wireless safety edge set up

Insert the 2 x 3.6v lithium batteries supplied into the bottom slot transmitter



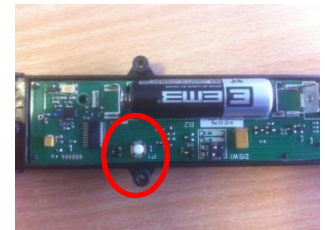
Wire your optical eyes into the bottom slot transmitter as shown in the image. **Green – 4** **Brown - 5** **White – 6**



Press the white button on the radio card for 2 seconds



Now press the white button on the bottom slot transmitter for 2 seconds



The middle LED on your radio card will be flashing – this means your safety edge is now programmed in!